



Stallings
-NC-

Development Ordinance Zoning Map 2023

- Town Hall
 - Stallings Elementary School
 - Atrium Hospital
 - County Line
 - Town of Stallings Limits
 - Proposed Silver Line
- STALLINGS ZONING**
- AG *Agriculture*
 - SFR-1 *Single-Family Residential*
 - SFR-2 *Single-Family Residential*
 - SFR-3 *Single-Family Residential*
 - MFT *Multi-Family Transitional*
 - TC *Town Center*
 - CIV *Civic*
 - MU-1 *Mixed-Use 1*
 - MU-2 *Mixed-Use 2*
 - C-74 *US Highway 74 Commercial*
 - CP-485 *Interstate Highway 485 Corporate Park*
 - VSR *Vehicle Service and Repair*
 - BC *Business Center*
 - IND *Industrial*
 - CZ *Conditional Zoning*

0 1/4 1/2 1 Mi
1:20,500

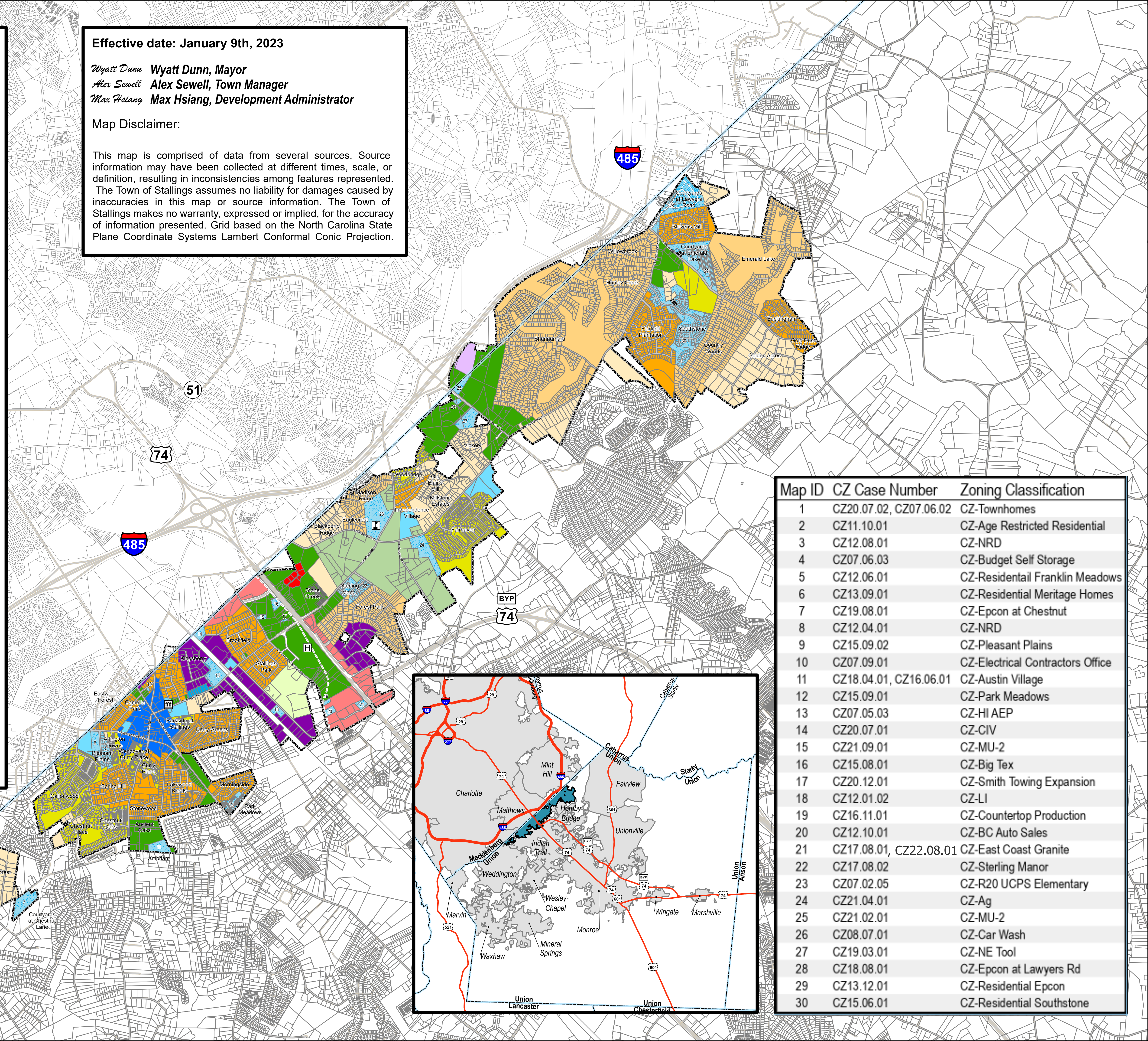


Effective date: January 9th, 2023

Wyatt Dunn **Wyatt Dunn, Mayor**
Alex Sewell **Alex Sewell, Town Manager**
Max Hsiang **Max Hsiang, Development Administrator**

Map Disclaimer:

This map is comprised of data from several sources. Source information may have been collected at different times, scale, or definition, resulting in inconsistencies among features represented. The Town of Stallings assumes no liability for damages caused by inaccuracies in this map or source information. The Town of Stallings makes no warranty, expressed or implied, for the accuracy of information presented. Grid based on the North Carolina State Plane Coordinate Systems Lambert Conformal Conic Projection.



Map ID	CZ Case Number	Zoning Classification
1	CZ20.07.02, CZ07.06.02	CZ-Townhomes
2	CZ11.10.01	CZ-Age Restricted Residential
3	CZ12.08.01	CZ-NRD
4	CZ07.06.03	CZ-Budget Self Storage
5	CZ12.06.01	CZ-Residential Franklin Meadows
6	CZ13.09.01	CZ-Residential Meritage Homes
7	CZ19.08.01	CZ-Epcon at Chestnut
8	CZ12.04.01	CZ-NRD
9	CZ15.09.02	CZ-Pleasant Plains
10	CZ07.09.01	CZ-Electrical Contractors Office
11	CZ18.04.01, CZ16.06.01	CZ-Austin Village
12	CZ15.09.01	CZ-Park Meadows
13	CZ07.05.03	CZ-HI AEP
14	CZ20.07.01	CZ-CIV
15	CZ21.09.01	CZ-MU-2
16	CZ15.08.01	CZ-Big Tex
17	CZ20.12.01	CZ-Smith Towing Expansion
18	CZ12.01.02	CZ-LI
19	CZ16.11.01	CZ-Countertop Production
20	CZ12.10.01	CZ-BC Auto Sales
21	CZ17.08.01, CZ22.08.01	CZ-East Coast Granite
22	CZ17.08.02	CZ-Sterling Manor
23	CZ07.02.05	CZ-R20 UCPS Elementary
24	CZ21.04.01	CZ-Ag
25	CZ21.02.01	CZ-MU-2
26	CZ08.07.01	CZ-Car Wash
27	CZ19.03.01	CZ-NE Tool
28	CZ18.08.01	CZ-Epcon at Lawyers Rd
29	CZ13.12.01	CZ-Residential Epcon
30	CZ15.06.01	CZ-Residential Southstone